



AUSTRALIAN BUREAU OF STATISTICS

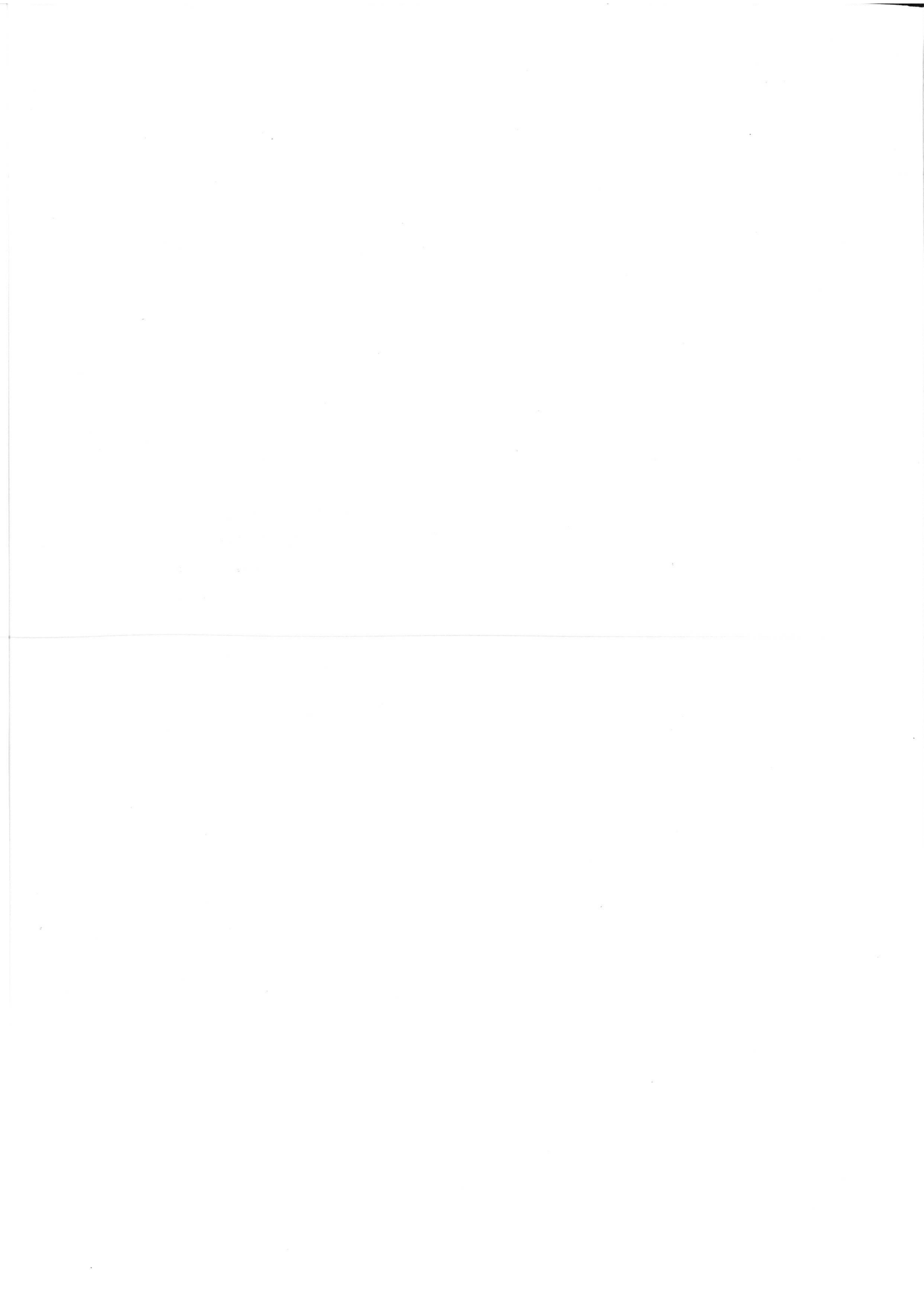
QUEENSLAND

**THE LABOUR FORCE:
REGIONAL ESTIMATES**

FEBRUARY 1987

Catalogue No. 6204.3

**AUSTRALIAN BUREAU OF STATISTICS
QUEENSLAND OFFICE**



THE LABOUR FORCE: REGIONAL ESTIMATES, QUEENSLAND, FEBRUARY 1987

PHONE INQUIRIES For more information about these statistics please contact Bevin Morris on Brisbane (07) 222 6029.

For other inquiries, including copies of publications, please contact Information Services on Brisbane (07) 222 6351.

MAIL INQUIRIES Please write to Information Services, Australian Bureau of Statistics (ABS), G.P.O. Box 1160, Brisbane, Q. 4001.

Contents

	<u>Page</u>
Explanatory Notes	2-4
Maps: Labour Force Regions, Queensland	5
Labour Force Regions, Brisbane Statistical Division	6
List of Brisbane City Suburbs for Labour Force Survey Regions	7

Diagram

1 Unemployment Rates in Brisbane Statistical Division, Moreton, and Wide Bay-Burnett/Darling Downs, February 1985 to February 1987	8
2 Unemployment Rates in Fitzroy/Mackay, North and Western Queensland, and North Queensland, February 1985 to February 1987	8
3 Participation Rates in Brisbane Statistical Division, Moreton, and Wide Bay-Burnett/Darling Downs, February 1985 to February 1987	9
4 Participation Rates in Fitzroy/Mackay, North and Western Queensland, and North Queensland, February 1985 to February 1987	9

Table

1 Labour Force Status of the Civilian Population Aged 15 Years and Over in Labour Force Regions, Queensland, December 1985 to February 1986 and December 1986 to February 1987	10,11
2 Labour Force Status of the Civilian Population Aged 15 Years and Over in Labour Force Regions by Sex and Age Group, Queensland, December 1986 to February 1987	12-17
3 Labour Force Status of the Civilian Population Aged 15 Years and Over by Labour Force Region as a Proportion of Total Queensland, February 1986 and February 1987	18
4 Employed Persons by Industry Division and Occupation Group in Labour Force Regions, Queensland, February 1987	19
5 Unemployed Persons by Duration of Unemployment in Labour Force Regions, Queensland, December 1985 to February 1986 and December 1986 to February 1987	20
Technical Notes	21-23

Explanatory Notes

Introduction

This publication contains regional estimates of the Queensland civilian labour force derived from the labour force survey part of the monthly population survey.

2. Background information on the dissemination of regional labour force statistics is provided in the Information Paper 'Release of Regional Labour Force Statistics' (Catalogue No. 6262.0).

3. Data for each region from October 1982 are available on request.

The Population Survey

4. The survey is based on a multi-stage area sample of private dwellings and non-private dwellings (hotels, motels, etc.) and usually covers slightly more than two-thirds of 1 per cent of the population of Queensland. The information is obtained from the occupants of selected dwellings by carefully chosen and specially trained interviewers. The interviews are generally conducted during a period of 2 weeks beginning on the Monday between the 6th and 12th of each month. The information obtained relates to the week before the interview (i.e. the survey week).

Scope

5. The labour force survey includes all persons aged 15 years and over except:

- (a) members of the permanent defence forces;
- (b) certain diplomatic personnel of overseas governments, customarily excluded from Census and estimated populations;
- (c) overseas visitors holidaying in Australia; and
- (d) members of non-Australian defence forces (and their dependants) stationed in Australia.

Definitions

6. The labour force category to which a person is assigned depends on the actual activity (i.e. whether working, looking for work, etc.) during the survey week. The following definitions, which conform closely to the international standard definitions specified by the International Labour Office (ILO), relate only to those persons within the scope of the survey.

7. Employed persons comprise all those aged 15 years and over who, during the survey week:

- a) worked for 1 hour or more for pay, profit, commission, or payment in kind in a job or business, or on a farm (including employees, employers, and self-employed persons); or
- (b) worked for 1 hour or more without pay in a family business or on a farm (i.e. unpaid family helpers); or
- (c) were employees who had a job but were not at work and were: on paid leave; on leave without pay for less than 4 weeks up to the end of the survey week; stood down without pay because of bad weather or plant break-down at their place of employment for less than 4 weeks up to the end of the survey week; on strike or locked out; on workers' compensation and expected to be returning to their job; or receiving wages or salary while undertaking full-time study; or were employers, self-employed persons, or unpaid family helpers who had a job, business, or farm, but were not at work.

8. Unemployed persons are those aged 15 years and over who were not employed during the survey week, and:

- (a) had actively looked for full-time or part-time work at any time in the 4 weeks up to the end of the survey week and:
 - (i) were available for work in the survey week, or would have been available except for temporary illness (i.e. lasting for less than 4 weeks to the end of the survey week); or
 - (ii) were waiting to start a new job within 4 weeks from the end of the survey week and would have started in the survey week if the job had been available then; or
- (b) were waiting to be called back to a full-time or part-time job from which they had been stood down without pay for less than 4 weeks up to the end of the survey week (including the whole of the survey week) for reasons other than bad weather or plant breakdown.

9. Persons actively looking for work include those writing, telephoning, or applying in person to an employer for work; answering a newspaper advertisement for work; or attending a factory or

Explanatory Notes (continued)

Definitions (continued)

Commonwealth Employment Service noticeboards; being registered with the Commonwealth Employment Service; checking or registering with any other employment agency, advertising or tendering for work; and contacting friends or relatives.

10. The unemployment rate for any group is the number unemployed expressed as a percentage of the labour force (i.e. employed plus unemployed) in the same group.

11. Duration of unemployment is the period from the time the person began looking for work or was laid off to the end of the survey week. Thus the survey measures current (and continuing) periods of unemployment rather than completed spells. For persons who may have begun looking for work while still employed, the duration of unemployment is defined as the period from the time the person last worked full-time for 2 weeks or more to the end of the survey week. Periods of unemployment are recorded in complete weeks and this results in a slight understatement of duration.

12. Median duration of unemployment is the duration which divides unemployed persons into two equal groups, one comprising persons whose duration of unemployment is above the median and the other comprising persons whose duration is below it.

13. The labour force comprises all persons who, during the survey week, were employed or unemployed, as defined above.

14. The labour force participation rate for any group is the labour force expressed as a percentage of the civilian population aged 15 years and over in the same group.

15. Persons not in the labour force are those who, during the survey week, were not in the categories employed or unemployed as defined. This category therefore includes persons who were keeping house (unpaid), attending an educational institution (e.g. school or university), retired or voluntarily inactive, permanently unable to work, inmates of institutions, trainee teachers, members of contemplative religious orders, and persons whose only activity during the survey week was jury service or unpaid voluntary work for a charitable organisation. Specific surveys of persons not in the labour force indicate that a number of persons want to work but are not classified as unemployed because they were not actively looking for work or were not available to begin

work in the survey week. Included in this group are the discouraged jobseekers and other persons marginally attached to the labour force.

16. Industry classification. Industry is classified according to the Australian Standard Industrial Classification (ASIC), 1983.

17. Occupation classification. Occupation is classified according to the Australian Standard Classification of Occupations (ASCO), 1986, which replaced the Classification and Classified List of Occupations (CCLLO), Revised November 1980, used in the surveys prior to August 1986. Detailed information on ASCO can be found in the ABS publication 'ASCO Statistical Classification' (Catalogue No. 1220.0).

18. Regions. Labour force regions are based on statistical divisions or groupings of statistical divisions.

19. The Brisbane Statistical Division (B.S.D.) Region is divided into the Brisbane City (Inner Suburbs and Outer Suburbs) and Balance of B.S.D. Regions. The Moreton Region is the Moreton Statistical Division; the Wide Bay-Burnett/Darling Downs Region is the Wide Bay-Burnett and Darling Downs Statistical Divisions; and the Fitzroy/Mackay Region is the Fitzroy and Mackay Statistical Divisions.

20. The North and Western Queensland Region comprises the North-West, Far North, Northern, Central-West, and South-West Statistical Divisions and the North Queensland Region combines the Far North and Northern Statistical Divisions.

21. The Brisbane Statistical Division comprises the Cities of Brisbane, Ipswich, Logan, and Redcliffe, the Shire of Redland, and parts of the Shires of Albert, Beaudesert, Caboolture, Moreton, and Pine Rivers.

22. Maps delineating the regions are included on pages 5 and 6. A listing of Brisbane City suburbs is contained on page 7.

Population Benchmarks

23. Labour force survey estimates are calculated in such a way as to add to the independently estimated distribution of the population aged 15 years and over by age and sex. This procedure compensates for under-enumeration in the survey and leads to more reliable estimates. Since regular

Explanatory Notes (continued)Definitions (continued)Population Benchmarks (continued)

estimates of the population are not available at the regional level, the State benchmarks were used to produce regional estimates. This methodology assumes a common pattern of under-enumeration at the regional level and also ensures that regional estimates add to the State totals.

24. As regional benchmarks are not used in the estimation procedures, regional estimates of the civilian population aged 15 years and over are not available. Although these figures can be derived by addition they should not be used as they cannot be regarded as being reliable.

Reliability of the Estimates

25. As with other labour force survey estimates, regional estimates are subject to sampling error and non-sampling error. (See Technical Notes pages 21 to 23.) Since regional estimates for particular labour force characteristics are components of corresponding estimates at the State level, they are subject to higher relative standard errors. As noted above, the use of regional benchmarks in the estimation of regional estimates is not possible.

26. For these reasons, users should note that regional estimates may be more volatile than corresponding State estimates and thus their use should be restricted to that of providing snapshot information at a given point in time. They should not be regarded as reliable indicators of short-term (monthly) movements.

Related Publications

27. Users may also wish to refer to the following publications which are available on request:

- 'Monthly Summary of Statistics' (1304.3) - Monthly
- 'Economic Indicators' (1307.3) - Monthly

'The Labour Force' (6201.3) - Quarterly Information Paper 'Questionnaires Used In the Labour Force Survey' (6232.0) - Latest Issue: June 1986
Information Paper 'Release of Regional Labour Force Statistics' (6262.0) - Latest Issue: April 1985

28. Current publications produced by the ABS are listed in the 'Catalogue of Publications' (Catalogue No. 1101.0) and those produced by the Queensland Office are listed in 'List of Publications' (Catalogue No. 1101.3). A 'Publications Advice' (Catalogue No. 1105.0) is issued on Tuesdays and Fridays which lists publications to be released in the next few days. These publications are available from any ABS Office.

Unpublished Statistics

29. The ABS can also make available certain regional labour force statistics which are not published. Where it is not practicable to provide the required statistics by telephone, they may be available in other forms, such as microfiche, photocopy, computer printout, or clerically extracted tabulation. A charge may be made for providing unpublished statistics in these forms.

30. For further information on these unpublished statistics contact Bevin Morris by telephoning Brisbane (07) 222 6029, or write to Information Services at the address above.

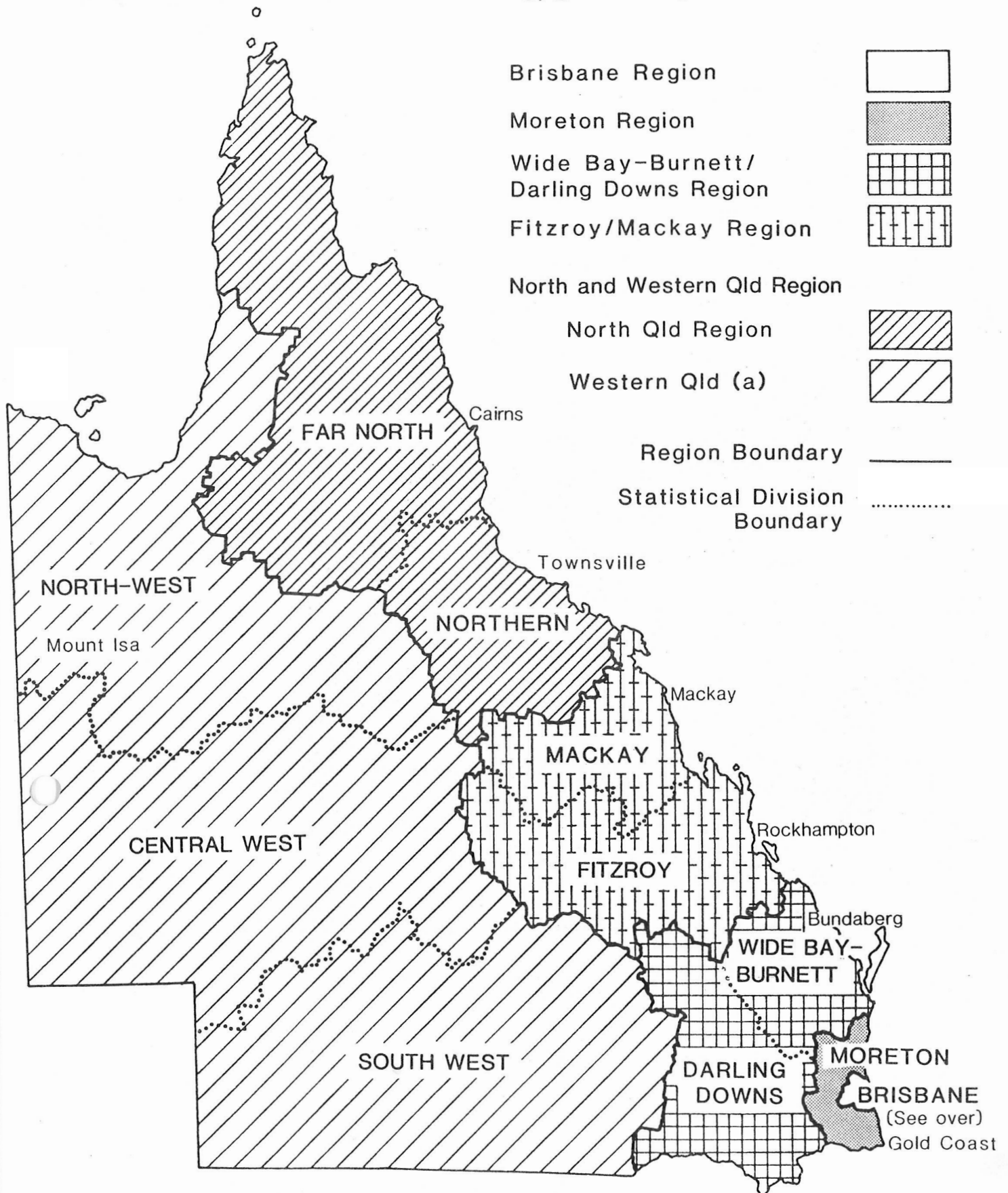
Symbols and Other Usages

- .. Not applicable.
- * Subject to sampling variability too high for most practical uses. (See Technical Notes pages 21 to 23 regarding reliability of the estimates.)

31. Where figures have been rounded, discrepancies may occur between sums of the component items and totals.

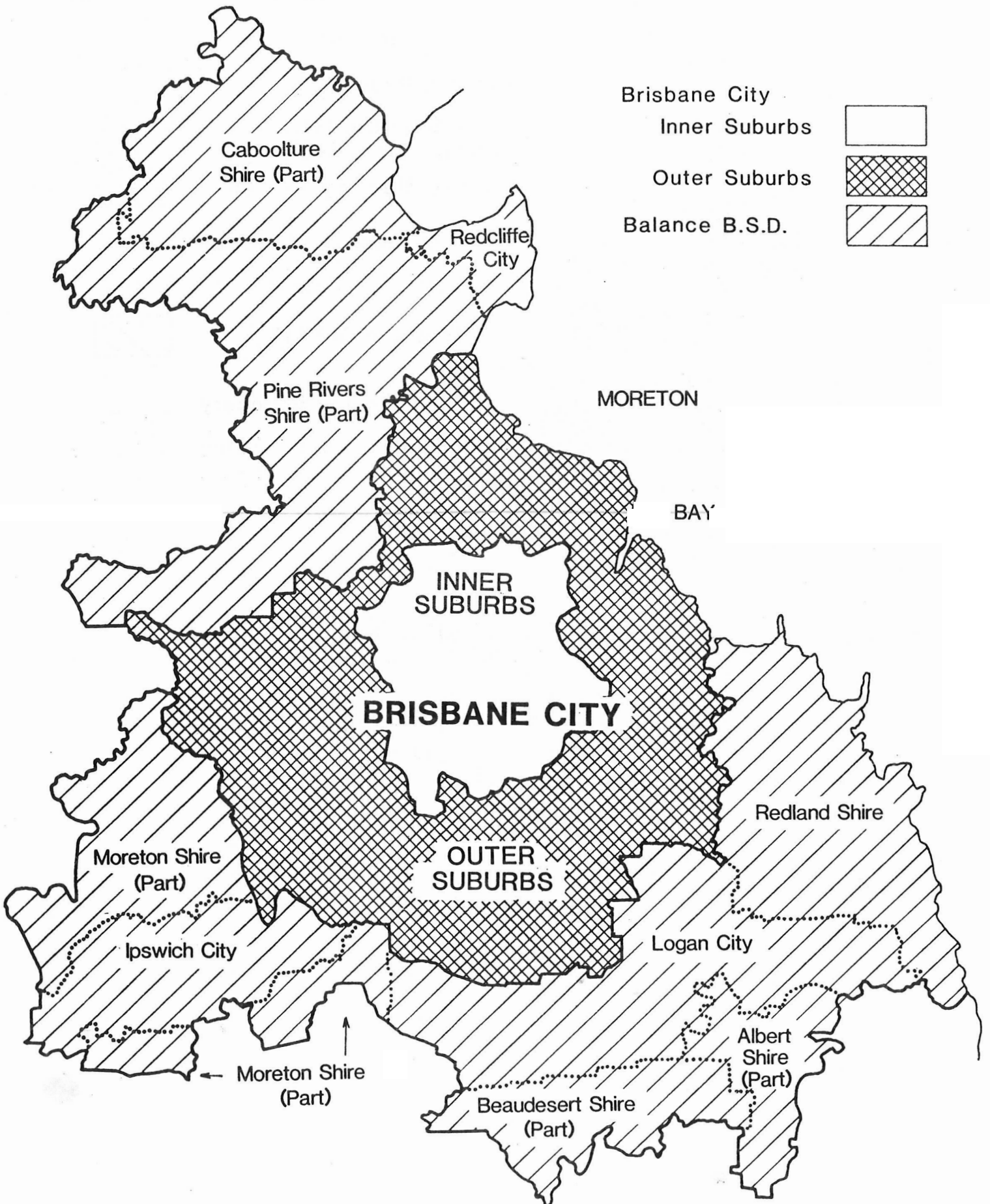
D. N. ALLEN
DEPUTY COMMONWEALTH STATISTICIAN

LABOUR FORCE REGIONS, QUEENSLAND



(a) Labour force estimates are not separately available for Western Queensland, but are combined with the North Queensland Region and published as North and Western Queensland Region.

LABOUR FORCE REGIONS, BRISBANE STATISTICAL DIVISION



Brisbane City Suburbs for Labour Force Survey Regions

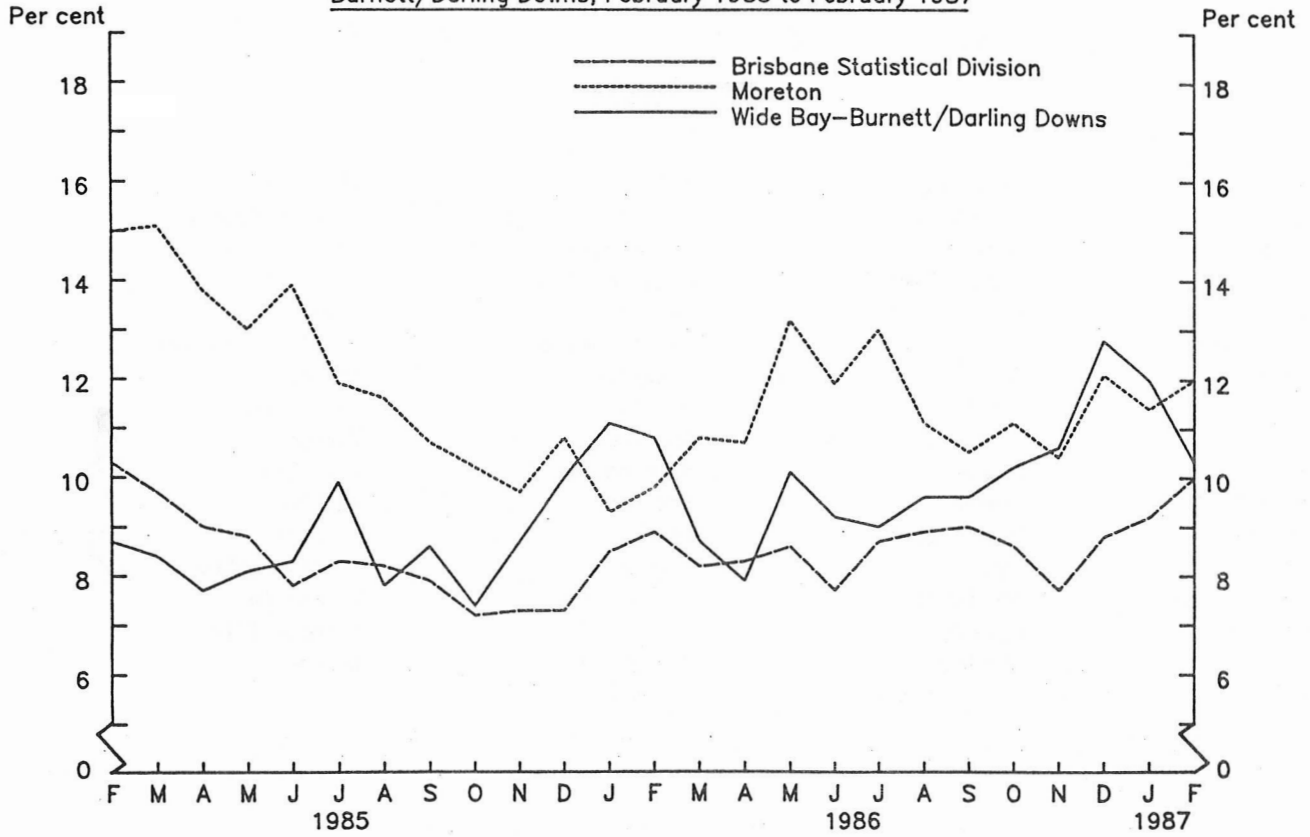
Inner Suburbs

Albion	Clayfield	Holland Park	Sherwood
Alderley	Coorparoo	Holland Park West	South Brisbane
Annerley	Corinda	Indooroopilly	Spring Hill
Ascot	Dutton Park	Kangaroo Point	St Lucia
Ashgrove	East Brisbane	Kedron	Stafford
Auchenflower	Enoggera	Kelvin Grove	Stafford Heights
Balmoral	Enoggera Military Camp	Lutwyche	Taringa
Bardon	Fairfield	Milton	Tarragindi
Bowen Hills	Fortitude Valley	Moorooka	Toowong
Bulimba	Graceville	Morningside	West End
Camp Hill	Grange	New Farm	Wilston
Cannon Hill	Greenslopes	Newmarket	Windsor
Carina	Hamilton	Newstead	Woolloongabba
Carina Heights	Hawthorne	Norman Park	Wooloowin
Carindale	Hendra	Nundah	Yeerongpilly
Chelmer	Herston	Paddington	Yeronga
City	Highgate Hill	Red Hill	

Outer Suburbs

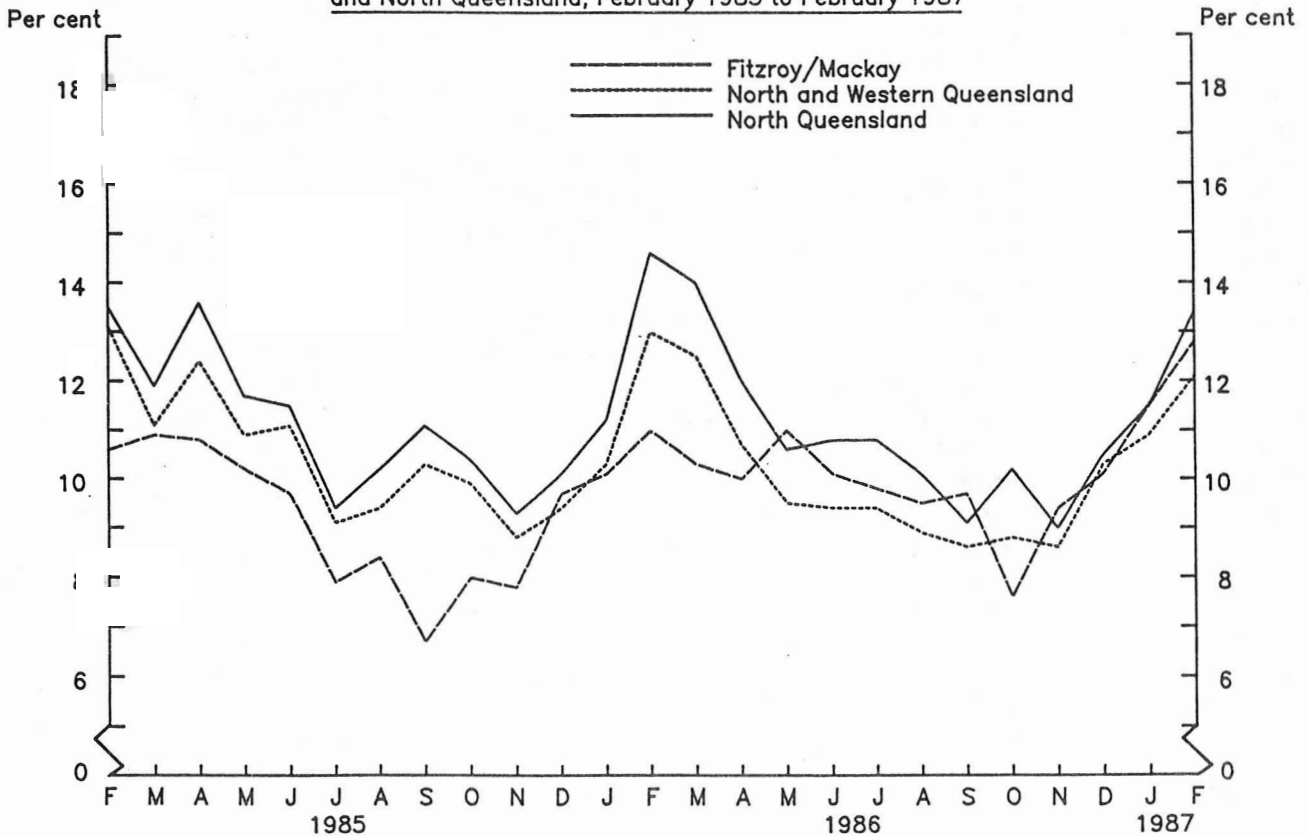
Acacia Ridge	Durack	Mansfield	Robertson
Algester	Eagle Farm	McDowall	Rochedale
Anstead	Eight Mile Plains	Middle Park	Rocklea
Archerfield	Ellen Grove	Mitchelton	Runcorn
Aspley	Enoggera State Forest	Moggill	Salisbury
Bald Hills	Everton Park	Moggill State Forest	Sandgate
Banyo	Ferny Grove	Moreton Island	Seventeen Mile Rocks
Bellbowrie	Fig Tree Pocket	(including Bishop, Fisherman, Green, Mud, St Helena, and Whyte Islands)	Stretton
Belmont	Fitzgibbon		Sumner
Berrinba	Geebung		Sunnybank
Boondall	Gumdale		Sunnybank Hills
Bracken Ridge	Heathwood	Mount Coot-tha Park	Taigum
Bridgeman Downs	Hemmant	Mount Gravatt	The Gap
Brighton	Inala	Mount Gravatt East	Tingalpa
Brookfield	Jamboree Heights	Mount Ommaney	Underwood
Burbank	Jindalee	Murarrie	Upper Brookfield
Calamvale	Karawatha	Nathan	Upper Kedron
Capalaba West	Kenmore	Northgate	Upper Mount Gravatt
Carseldine	Kenmore Hills	Nudgee	Virginia
Chandler	Keperra	Nudgee Beach	Wacol
Chapel Hill	Kuraby	Oxley	Wakerley
Chermside	Larapinta	Pallara	Wavell Heights
Chermside West	Lota	Parkinson	Westlake
Cooper's Plains	Lower Nudgee	Pinjarra Hills	Willawong
Cribb Island	Lytton	Pinkenba	Wishart
Darra	MacGregor	Pullenvale	Wynnum
Deagon	Mackenzie	Ransome	Wynnum West
Doolandella	Manly	Richlands	Zillmere
Drewvale	Manly West	Riverhills	

Diagram 1 - Unemployment Rates (a) in Brisbane Statistical Division, Moreton, and Wide Bay-Burnett/Darling Downs, February 1985 to February 1987



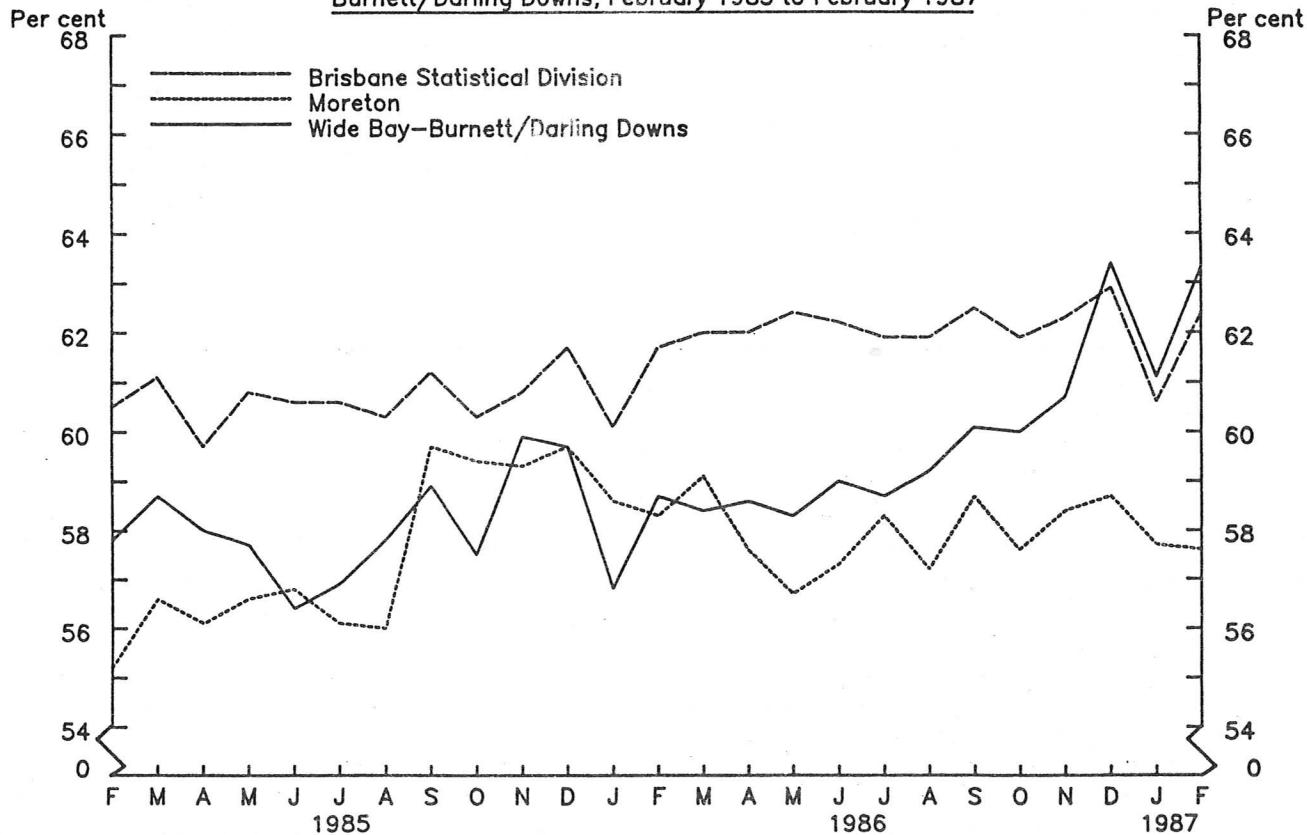
(a) Unemployed persons as a percentage of the labour force.

Diagram 2 - Unemployment Rates (a) in Fitzroy/Mackay, North and Western Queensland, and North Queensland, February 1985 to February 1987



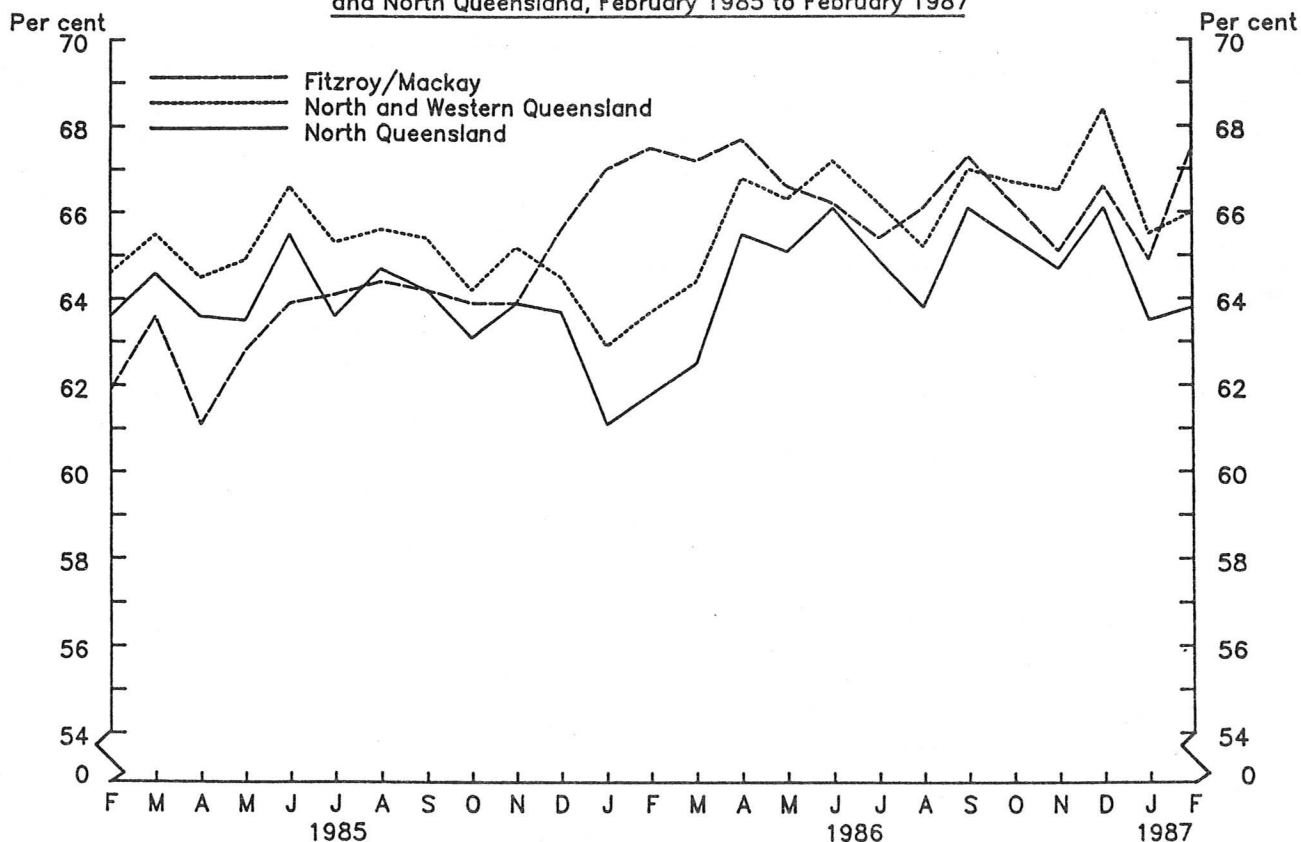
(a) Unemployed persons as a percentage of the labour force.

Diagram 3 - Participation Rates (a) in Brisbane Statistical Division, Moreton, and Wide Bay-Burnett/Darling Downs, February 1985 to February 1987



(a) The labour force as a percentage of the civilian population aged 15 years and over.

Diagram 4 - Participation Rates (a) in Fitzroy/Mackay, North and Western Queensland and North Queensland, February 1985 to February 1987



(a) The labour force as a percentage of the civilian population aged 15 years and over.

Table 2 - Labour Force Status of the Civilian Population Aged 15 Years and Over in Labour Force Regions by Sex and Age Group, Queensland, December 1986 to February 1987

Particulars	Employed	Unemployed		Total labour force		Not in labour force
		Number	Unemployment rate (a)	Number	Participation rate (b)	
		'000	'000	%	'000	
Brisbane Statistical Division						
December 1986						
Males	310.9	27.6	8.2	338.5	77.2	99.8
Females	210.2	22.6	9.7	232.9	49.6	237.0
Persons	521.1	50.2	8.8	571.4	62.9	336.8
January 1987						
Males	303.5	30.3	9.1	333.8	76.0	105.3
Females	197.3	20.3	9.3	217.6	46.2	253.1
Persons	500.8	50.6	9.2	551.4	60.6	358.4
February 1987						
Males	303.5	31.6	9.4	335.1	76.2	104.7
Females	208.3	25.5	10.9	233.8	49.6	237.8
Persons	511.8	57.1	10.0	568.9	62.4	342.6
Age group						
15-24 years	118.7	30.8	20.6	149.5	73.5	53.9
15-19 years	51.3	17.8	25.7	69.0	64.7	37.7
20-24 years	67.5	13.0	16.1	80.5	83.2	16.2
25-44 years	272.8	17.3	6.0	290.1	79.6	74.2
45 years and over	120.2	9.0	7.0	129.2	37.6	214.4
Average for 3 months ended						
February 1986	501.7	45.2	8.3	546.8	61.2	347.4
February 1987	511.2	52.6	9.3	563.9	62.0	345.9
Brisbane City						
December 1986						
Males	194.6	17.1	8.1	211.7	74.9	70.9
Females	134.4	14.3	9.6	148.7	48.7	156.7
Persons	329.0	31.4	8.7	360.4	61.3	227.6
January 1987						
Males	191.5	17.9	8.5	209.4	74.0	73.5
Females	127.0	11.7	8.4	138.8	45.0	169.4
Persons	318.6	29.6	8.5	348.2	58.9	242.9
February 1987						
Males	189.5	18.1	8.7	207.6	73.7	73.9
Females	133.4	14.2	9.6	147.6	48.6	156.1
Persons	322.9	32.3	9.1	355.2	60.7	230.0
Age group						
15-24 years	77.9	18.0	18.8	95.9	73.0	35.5
15-19 years	30.5	9.9	24.5	40.4	61.3	25.6
20-24 years	47.3	8.1	14.6	55.4	84.8	10.0
25-44 years	162.4	8.8	5.1	171.2	80.7	41.0
45 years and over	82.6	5.5	6.3	88.1	36.5	153.5
Average for 3 months ended						
February 1986	323.3	27.7	7.9	351.0	60.0	234.2
February 1987	323.5	31.1	8.8	354.6	60.3	233.5

Table 2 - Labour Force Status of the Civilian Population Aged 15 Years and Over in Labour Force Regions by Sex and Age Group, Queensland, December 1986 to February 1987 (continued)

Particulars	Employed	Unemployed		Total labour force		Not in labour force
		Number	Unemployment rate (a)	Number	Participation rate (b)	
		'000	'000	%	'000	
Inner Suburbs						
December 1986						
Males	88.2	8.6	8.9	96.9	72.6	36.6
Females	65.2	6.3	8.9	71.5	48.1	77.2
Persons	153.4	14.9	8.9	168.4	59.7	113.8
January 1987						
Males	91.4	6.5	6.7	97.9	71.7	38.6
Females	62.0	5.8	8.5	67.8	44.6	84.1
Persons	153.4	12.3	7.4	165.7	57.5	122.7
February 1987						
Males	89.5	8.8	8.9	98.3	72.4	37.5
Females	65.6	6.7	9.2	72.2	48.3	77.3
Persons	155.1	15.4	9.1	170.6	59.8	114.8
Age group						
15-24 years	38.7	8.1	17.3	46.8	77.9	13.2
15-19 years	12.2	3.0	19.6	15.2	63.8	8.6
20-24 years	26.5	5.1	16.1	31.6	87.2	4.6
25-44 years	79.7	3.8	4.6	83.5	81.7	18.7
45 years and over	36.7	3.5	8.8	40.3	32.7	82.9
Average for 3 months ended						
February 1986	152.3	15.7	9.4	168.1	58.5	119.4
February 1987	154.0	14.2	8.5	168.2	59.0	117.1
Outer Suburbs						
December 1986						
Males	106.4	8.5	7.4	114.9	77.0	34.2
Females	69.2	8.0	10.3	77.2	49.3	79.5
Persons	175.6	16.4	8.6	192.1	62.8	113.7
January 1987						
Males	100.2	11.3	10.2	111.5	76.2	34.9
Females	65.0	6.0	8.4	70.9	45.4	85.4
Persons	165.2	17.3	9.5	182.5	60.3	120.2
February 1987						
Males	99.9	9.4	8.6	109.3	75.0	36.4
Females	67.8	7.5	10.0	75.3	48.9	78.8
Persons	167.8	16.9	9.1	184.6	61.6	115.2
Age group						
15-24 years	39.2	9.9	20.2	49.1	68.8	22.3
15-19 years	18.4	6.9	27.3	25.3	59.8	17.0
20-24 years	20.8	3.0	12.7	23.8	81.7	5.3
25-44 years	82.7	5.0	5.7	87.6	79.7	22.4
45 years and over	45.9	*	*	47.9	40.4	70.6
Average for 3 months ended						
February 1986	170.9	12.0	6.6	182.9	61.4	114.8
February 1987	169.5	16.9	9.1	186.4	61.6	116.4

Table 2 - Labour Force Status of the Civilian Population Aged 15 Years and Over in Labour Force Regions by Sex and Age Group, Queensland, December 1986 to February 1987 (continued)

Particulars	Employed	Unemployed		Total labour force		Not in labour force
		Number	Unemployment rate (a)	Number	Participation rate (b)	
		'000	%	'000	%	
Balance of Brisbane Statistical Division						
December 1986						
Males	116.3	10.5	8.3	126.8	81.4	28.9
Females	75.8	8.3	9.9	84.2	51.2	80.3
Persons	192.1	18.9	8.9	211.0	65.9	109.2
January 1987						
Males	112.0	12.4	10.0	124.4	79.7	31.8
Females	70.2	8.6	10.9	78.9	48.5	83.7
Persons	182.2	21.0	10.3	203.2	63.8	115.5
February 1987						
Males	114.1	13.4	10.5	127.5	80.5	30.8
Females	74.9	11.3	13.2	86.2	51.3	81.7
Persons	188.9	24.7	11.6	213.7	65.5	112.5
Age group						
15-24 years	40.9	12.8	23.8	53.6	74.5	18.4
15-19 years	20.7	7.9	27.6	28.6	70.2	12.1
20-24 years	20.2	4.9	19.5	25.0	80.1	6.2
25-44 years	110.5	8.5	7.1	119.0	78.2	33.2
45 years and over	37.6	3.5	8.5	41.1	40.3	61.0
Average for 3 months ended						
February 1986	178.4	17.4	8.9	195.9	63.4	113.2
February 1987	187.7	21.5	10.3	209.3	65.1	112.4
Moreton						
December 1986						
Males	95.1	13.2	12.2	108.3	70.2	46.1
Females	67.0	9.2	12.1	76.2	47.7	83.6
Persons	162.2	22.4	12.1	184.6	58.7	129.7
January 1987						
Males	95.6	13.7	12.6	109.3	69.8	47.3
Females	66.9	7.1	9.6	74.0	45.9	87.3
Persons	162.5	20.9	11.4	183.4	57.7	134.5
February 1987						
Males	96.2	11.2	10.5	107.4	68.5	49.5
Females	64.0	10.5	14.1	74.5	46.9	84.3
Persons	160.2	21.8	12.0	181.9	57.6	133.8
Age group						
15-24 years	37.7	9.4	20.0	47.1	76.3	14.6
15-19 years	17.8	5.3	23.0	23.1	69.9	9.9
20-24 years	19.9	4.1	17.1	24.0	83.6	4.7
25-44 years	83.7	9.6	10.3	93.3	79.0	24.8
45 years and over	38.8	2.8	6.7	41.6	30.6	94.4
Average for 3 months ended						
February 1986	160.4	17.7	9.9	178.1	58.9	124.3
February 1987	161.6	21.7	11.8	183.3	58.0	132.7

Table 2 - Labour Force Status of the Civilian Population Aged 15 Years and Over in Labour Force Regions by Sex and Age Group, Queensland, December 1986 to February 1987 (continued)

Particulars	Employed	Unemployed		Total labour force		Not in labour force
		Number	Unemployment rate (a)	Number	Participation rate (b)	
		'000	'000	%	'000	
Wide Bay-Burnett/Darling Downs						
December 1986						
Males	91.5	13.2	12.6	104.7	78.2	29.2
Females	57.7	8.7	13.1	66.4	48.8	69.8
Persons	149.2	21.9	12.8	171.1	63.4	98.9
January 1987						
Males	93.1	12.4	11.8	105.6	78.5	28.9
Females	52.9	7.4	12.3	60.3	44.0	76.7
Persons	146.0	19.8	12.0	165.8	61.1	105.6
February 1987						
Males	93.6	11.4	10.8	105.0	79.6	26.8
Females	57.3	6.0	9.5	63.4	47.2	71.0
Persons	151.0	17.4	10.3	168.4	63.3	97.8
Age group						
15-24 years	38.6	8.3	17.6	46.9	74.2	16.3
15-19 years	18.6	5.3	22.1	23.8	65.4	12.6
20-24 years	20.1	3.0	13.0	23.1	86.2	3.7
25-44 years	75.5	5.3	6.6	80.8	78.1	22.7
45 years and over	36.8	3.8	9.4	40.6	40.9	58.8
Average for 3 months ended						
February 1986	126.0	15.0	10.6	140.9	58.4	100.3
February 1987	148.7	19.7	11.7	168.4	62.6	100.8
Fitzroy/Mackay						
December 1986						
Males	74.3	6.9	8.5	81.2	84.2	15.3
Females	36.9	5.5	13.0	42.4	47.5	46.9
Persons	111.2	12.5	10.1	123.7	66.6	62.1
January 1987						
Males	73.8	7.7	9.4	81.4	82.2	17.7
Females	34.8	6.4	15.5	41.2	45.8	48.6
Persons	108.5	14.0	11.5	122.6	64.9	66.3
February 1987						
Males	73.6	8.7	10.5	82.3	82.7	17.2
Females	40.6	8.1	16.7	48.7	51.5	45.8
Persons	114.2	16.8	12.8	131.0	67.5	63.1
Age group						
15-24 years	26.0	8.7	25.2	34.7	72.4	13.2
15-19 years	9.0	4.8	35.1	13.8	61.9	8.5
20-24 years	17.0	*	*	20.9	81.5	4.7
25-44 years	63.2	5.7	8.3	68.9	81.7	15.5
45 years and over	25.0	*	*	27.4	44.3	34.4
Average for 3 months ended						
February 1986	114.6	13.1	10.3	127.7	66.7	63.8
February 1987	111.3	14.4	11.5	125.7	66.3	63.8

Table 2 - Labour Force Status of the Civilian Population Aged 15 Years and Over in Labour Force Regions by Sex and Age Group, Queensland, December 1986 to February 1987 (continued)

Particulars	Employed	Unemployed		Total labour force		Not in labour force
		Number	Unemployment rate (a)	Number	Participation rate (b)	
		'000	%	'000	%	
North and Western Queensland						
December 1986						
Males	110.5	12.3	10.0	122.7	81.8	27.4
Females	67.1	8.0	10.7	75.1	53.9	64.2
Persons	177.5	20.3	10.3	197.8	68.4	91.6
January 1987						
Males	103.2	12.5	10.8	115.7	79.1	30.5
Females	62.7	7.7	10.9	70.4	51.0	67.7
Persons	165.9	20.2	10.9	186.1	65.5	98.2
February 1987						
Males	105.3	14.1	11.8	119.4	79.8	30.1
Females	62.6	9.1	12.7	71.7	51.2	68.5
Persons	167.9	23.2	12.1	191.1	66.0	98.6
Age group						
15-24 years	36.3	11.3	23.7	47.5	76.6	14.5
15-19 years	14.9	6.0	28.7	21.0	67.0	10.3
20-24 years	21.3	5.3	19.8	26.6	86.5	4.2
25-44 years	87.4	9.2	9.6	96.7	80.0	24.1
45 years and over	44.2	*	*	46.9	43.9	60.0
Average for 3 months ended						
February 1986	167.6	20.5	10.9	188.2	63.7	107.1
February 1987	170.4	21.2	11.1	191.7	66.6	96.1
North Queensland						
December 1986						
Males	86.3	9.3	9.7	95.6	79.5	24.7
Females	52.8	7.1	11.8	59.9	52.1	55.2
Persons	139.1	16.4	10.5	155.5	66.1	79.9
January 1987						
Males	79.9	10.6	11.7	90.5	77.1	26.8
Females	49.3	6.3	11.2	55.6	49.3	57.2
Persons	129.3	16.9	11.5	146.1	63.5	84.1
February 1987						
Males	80.6	11.7	12.7	92.3	76.9	27.7
Females	48.8	8.3	14.5	57.1	49.9	57.2
Persons	129.4	20.0	13.4	149.4	63.8	84.9
Age group						
15-24 years	28.1	9.2	24.8	37.3	75.5	12.1
15-19 years	12.5	5.0	28.7	17.5	66.1	9.0
20-24 years	15.6	4.2	21.2	19.8	86.3	3.1
25-44 years	67.3	8.4	11.1	75.7	80.0	19.0
45 years and over	34.0	*	*	36.4	40.3	53.8
Average for 3 months ended						
February 1986	131.3	17.8	11.9	149.1	62.2	90.6
February 1987	132.6	17.8	11.8	150.4	64.4	82.9

Table 2 - Labour Force Status of the Civilian Population Aged 15 Years and Over in Labour Force Regions by Sex and Age Group, Queensland, December 1986 to February 1987 (continued)

Particulars	Employed	Unemployed		Total labour force		Not in labour force
		Number	Unemployment rate (a)	Number	Participation rate (b)	
		'000	'000	%	'000	
Total Queensland						
December 1986						
Males	682.3	73.2	9.7	755.5	77.6	217.6
Females	438.9	54.1	11.0	493.1	49.6	501.5
Persons	1,121.2	127.3	10.2	1,248.5	63.5	719.1
January 1987						
Males	669.1	76.6	10.3	745.8	76.5	229.6
Females	414.6	48.9	10.6	463.6	46.5	533.4
Persons	1,083.7	125.6	10.4	1,209.3	61.3	763.0
February 1987						
Males	672.3	76.9	10.3	749.2	76.6	228.4
Females	432.7	59.3	12.1	492.0	49.2	507.4
Persons	1,105.0	136.2	11.0	1,241.3	62.8	735.8
Age group						
15-24 years	257.3	68.5	21.0	325.7	74.3	112.6
15-19 years	111.5	39.2	26.0	150.7	65.6	79.1
20-24 years	145.8	29.3	16.7	175.0	83.9	33.5
25-44 years	582.7	47.2	7.5	629.9	79.6	161.3
45 years and over	265.1	20.6	7.2	285.7	38.2	462.0
Average for 3 months ended						
February 1986	1,070.2	111.5	9.4	1,181.7	61.4	742.9
February 1987	1,103.3	129.7	10.5	1,233.0	62.5	739.3

(a) The number of unemployed in each group as a percentage of the labour force in the same group.

(b) The labour force in each group as a percentage of the civilian population aged 15 years and over in the same group.

Table 3 - Labour Force Status of the Civilian Population Aged 15 Years and Over by Labour Force Region as a Proportion of Total Queensland, February 1986 and February 1987
(per cent)

Region	Employed	Unemployed	Total labour force	Not in labour force
February 1986				
Brisbane Statistical Division	47.1	40.8	46.4	46.4
Brisbane City	30.5	24.6	29.9	31.5
Inner Suburbs	14.2	13.3	14.1	16.0
Outer Suburbs	16.2	11.3	15.7	15.5
Balance of B.S.D.	16.6	16.3	16.6	14.9
Moreton	14.7	14.2	14.7	16.9
Wide Bay-Burnett/Darling				
Downs	11.9	12.7	11.9	13.5
Fitzroy/Mackay	10.9	11.9	11.0	8.5
North and Western Queensland ..	15.5	20.4	16.0	14.6
North Queensland	12.0	18.2	12.6	12.5
<u>Total Queensland</u>	100.0	100.0	100.0	100.0
February 1987				
Brisbane Statistical Division	46.3	41.9	45.8	46.6
Brisbane City	29.2	23.7	28.6	31.3
Inner Suburbs	14.0	11.3	13.7	15.6
Outer Suburbs	15.2	12.4	14.9	15.7
Balance of B.S.D.	17.1	18.2	17.2	15.3
Moreton	14.5	16.0	14.7	18.2
Wide Bay-Burnett/Darling				
Downs	13.7	12.8	13.6	13.3
Fitzroy/Mackay	10.3	12.3	10.6	8.6
North and Western Queensland ..	15.2	17.0	15.4	13.4
North Queensland	11.7	14.7	12.0	11.5
<u>Total Queensland</u>	100.0	100.0	100.0	100.0

Table 4 - Employed Persons (a) by Industry Division and Occupation Group in Labour Force Regions, Queensland, February 1987
('000)

Particulars	Brisbane Statistical Division										
	Brisbane City					Moreton	Wide Bay- Darling Downs	Fitzroy Mackay	North and Western Qld		Total Qld
	Inner Suburbs	Outer Suburbs	Total	Balance of B.S.D.	Total				North Qld	Total	
Industry Division											
Agriculture, forestry, fishing, hunting	*	*	*	3.4	4.0	14.4	28.1	16.9	13.6	24.1	87.5
Mining	*	*	*	2.5	4.3	*	*	7.6	*	8.1	22.0
Manufacturing	16.3	25.8	42.1	32.3	74.4	16.5	16.2	13.9	10.6	11.9	132.8
Electricity, gas, and water	*	*	4.4	*	6.8	*	2.8	*	*	3.2	17.2
Construction	9.5	14.2	23.7	14.3	37.9	19.1	8.5	9.8	10.4	12.3	87.6
Wholesale and retail trade	31.0	42.7	73.6	47.2	120.8	37.3	31.3	17.5	27.4	32.1	239.0
Transport and storage	9.5	11.2	20.7	14.6	35.4	4.9	9.6	8.9	11.5	14.0	72.7
Communication	3.4	4.7	8.1	3.9	12.0	2.5	*	*	3.1	3.5	21.3
Finance, property, and business services	23.3	19.0	42.3	16.9	59.3	17.7	9.3	6.4	9.0	10.6	103.2
Public administration and defence	9.1	7.7	16.8	10.8	27.6	4.3	6.2	*	7.1	8.4	49.9
Community services	35.4	27.9	63.4	31.3	94.7	20.5	26.3	17.1	22.9	26.9	185.4
Recreation, personal, and other services	14.5	10.8	25.3	9.4	34.6	20.7	9.6	8.5	9.2	13.0	86.4
<u>Total employed</u>	155.1	167.8	322.9	188.9	511.8	160.2	151.0	114.2	129.4	167.9	1,105.0
Wage and salary earners	136.9	148.7	285.6	164.1	449.7	115.8	109.2	87.6	99.9	127.2	889.3
Other	18.2	19.1	37.3	24.8	62.1	44.4	41.8	26.6	29.5	40.8	215.7
Occupation Group											
Managers and administrators	7.0	9.7	16.7	11.4	28.0	21.0	24.0	16.7	13.9	21.1	110.9
Professionals	27.3	18.9	46.2	14.6	60.8	14.1	13.8	10.8	11.6	13.5	113.1
Para-professionals	11.5	8.4	19.9	12.4	32.3	5.4	7.1	5.0	8.3	10.4	60.3
Tradespersons	19.7	27.3	47.0	35.7	82.7	30.0	21.5	18.2	23.0	30.0	182.3
Clerks	34.4	39.0	73.3	34.5	107.8	21.2	18.4	13.5	19.3	23.6	184.4
Salespersons and professional service workers	25.3	29.0	54.3	31.5	85.8	33.5	21.4	15.3	20.2	24.3	180.3
Plant and machine operators, and drivers	8.4	12.0	20.4	15.5	35.9	10.1	13.6	12.5	11.0	14.1	86.1
Labourers and related workers.....	21.6	23.6	45.2	33.2	78.4	24.9	31.2	22.2	22.1	31.0	187.7
<u>Total employed</u>	155.1	167.8	322.9	188.9	511.8	160.2	151.0	114.2	129.4	167.9	1,105.0

(a) Civilians aged 15 years and over.

Table 5 - Unemployed Persons by Duration of Unemployment (a) in Labour Force Regions, Queensland,
December 1985 to February 1986 and December 1986 and February 1987

Region	Under 13 weeks	13 weeks and over	Median duration	Median duration
	'000	'000	weeks	weeks
	December 1986		December 1985	
Brisbane Statistical Division	24.4	25.9	13.0	13.0
Brisbane City	16.0	15.4	11.0	13.0
Inner Suburbs	7.1	7.8	13.0	13.0
Outer Suburbs	8.9	7.6	10.0	*
Balance of B.S.D.	8.4	10.5	18.0	17.0
Moreton	10.8	11.6	13.0	18.0
Wide Bay-Burnett/Darling Downs ...	10.2	11.7	14.0	24.0
Fitzroy/Mackay	5.9	6.6	17.0	18.0
North and Western Queensland	11.1	9.2	10.0	13.0
North Queensland	9.3	7.1	8.0	13.0
<u>Total Queensland</u>	62.3	65.0	13.0	15.0
	January 1987		January 1986	
Brisbane Statistical Division	25.5	25.1	12.0	9.0
Brisbane City	15.8	13.8	10.0	8.0
Inner Suburbs	6.0	6.3	13.0	8.0
Outer Suburbs	9.8	7.5	9.0	8.0
Balance of B.S.D.	9.6	11.4	16.0	13.0
Moreton	9.4	11.4	16.0	10.0
Wide Bay-Burnett/Darling Downs ...	9.1	10.8	17.0	10.0
Fitzroy/Mackay	6.8	7.2	16.0	15.0
North and Western Queensland	11.9	8.3	8.0	8.0
North Queensland	10.5	6.4	7.0	9.0
<u>Total Queensland</u>	62.6	62.9	13.0	10.0
	February 1987		February 1986	
Brisbane Statistical Division	28.1	28.9	13.0	8.0
Brisbane City	16.3	16.1	12.0	8.0
Inner Suburbs	7.1	8.3	13.0	9.0
Outer Suburbs	9.1	7.8	12.0	7.0
Balance of B.S.D.	11.9	12.9	13.0	8.0
Moreton	9.8	11.9	14.0	16.0
Wide Bay-Burnett/Darling Downs ...	7.1	10.3	21.0	14.0
Fitzroy/Mackay	8.1	8.7	13.0	13.0
North and Western Queensland	12.6	10.5	10.0	10.0
North Queensland	11.7	8.3	10.0	11.0
<u>Total Queensland</u>	65.8	70.4	13.0	11.0

(a) See Explanatory Notes.

Technical Notes

Estimation Procedure

The labour force estimates are derived from the monthly population survey and are calculated in such a way as to add to the independently estimated distribution of the population aged 15 years and over by age and sex. This procedure compensates for under-enumeration in the survey and leads to more reliable estimates.

Since regular estimates of the population are not available at the regional level, the State benchmarks were used to produce regional estimates. This methodology assumes a common pattern of under-enumeration at the regional level and also ensures that regional estimates add to the State totals.

Reliability of the Estimates

As with other labour force survey estimates, regional estimates are subject to sampling error and non-sampling error. Since regional estimates for particular labour force characteristics are components of corresponding estimates at the State level, they are subject to higher relative standard errors. As noted above, the use of regional benchmarks in the estimation of regional estimates is not possible.

For these reasons, users should note that regional estimates may be more volatile than corresponding State estimates and thus they should not be regarded as reliable indicators of short-term (monthly) movements.

The sampling error is a measure of the variability that occurs by chance because a sample, rather than the entire population, is surveyed. Since the estimates in this publication are based on information obtained from occupants of a sample of dwellings, the estimates and the movements derived from them are subject to sampling variability; that is, they may differ from the figures that would have been produced if all dwellings had been included in the survey. One measure of the likely difference is given by the standard error which indicates the extent to which an estimate might have varied by chance because only a sample of dwellings was included. There are about two chances in three that a sample estimate will differ by less than one standard error from the figure that would have been obtained if all dwellings had been included and about 19 chances in 20 that the difference will be less than two standard errors. The standard error can also be expressed as a percentage of the estimate, and this is known as the relative standard error.

Space does not allow for the separate indication of the standard errors of all estimates in this publication. Standard errors of estimates and monthly movements should be determined by using Tables A and B.

The size of the standard error increases with the level of the estimate, so that the larger the estimate the larger the standard error. However, it should be noted that the larger the sample estimate the smaller will be the standard error in percentage terms. Thus, larger sample estimates will be relatively more reliable than smaller estimates.

As the standard errors in Table A show, the smaller the estimate the higher is the relative standard error. Very small estimates are subject to such high standard errors (relative to the size of the estimate) as to detract seriously from their value for most reasonable uses. In the tables in this publication, estimates below the levels shown in Table A, and percentages based on such estimates, have not been included but are indicated by *. Although figures for these small components can in some cases be derived by subtraction, they should not be regarded as reliable. See text below concerning the higher publication cut-off point for estimates of median duration of unemployment.

The movement in the level of an estimate is also subject to sampling variability. The standard error of the movement depends on the levels of the estimates from which the movement is obtained rather than the size of the movement. Standard errors of monthly movements are given in Table B. The estimates of standard error of monthly movements apply only to estimates of movements between two consecutive months. Movements between corresponding months of consecutive quarters (quarterly movements), corresponding months of consecutive years (annual movements), and other non-consecutive months, will generally be subject to somewhat greater sampling variability than is indicated in Table B. Standard errors of quarterly movements can be obtained by multiplying the figures in Table B by 1.4. Standard errors of all annual movements can be obtained by multiplying the figures in Table A by 1.4. When using Table A or Table B to calculate standard errors of movements, refer to the larger of the two estimates from which the movement is derived.

Examples of the calculation and use of standard errors are given in the ABS publication 'The Labour Force' (Catalogue No. 6201.3).

Table A - Standard Errors of Labour Force Estimates (a)

Size of estimate	Brisbane Statistical Division		Brisbane City						Balance of Brisbane Statistical Division		Moreton	Wide Bay-Burnett/Darling Downs		Fitzroy/Mackay		North and Western Queensland		North Queensland		Queensland		
			Inner Suburbs		Outer Suburbs		Total															
	Standard error		Standard error		Standard error		Standard error		Standard error		Standard error		Standard error		Standard error		Standard error		Standard error		Standard error	
	No.	%	No.	%	No.	%	No.	%	No.	%	No.	%	No.	%	No.	%	No.	%	No.	%	No.	%
2,500	*	*	580	23.03	570	22.75	610	24.58	580	23.06	620	24.67	600	24.12	*	*	*	*	*	*	*	*
3,000	690	23.16	630	21.08	620	20.82	660	22.12	630	21.18	680	22.58	660	22.08	*	*	750	25.00	760	25.41	690	23.16
4,000	800	19.91	730	18.34	720	18.11	750	18.76	730	18.36	790	19.64	770	19.21	960	23.92	870	21.75	880	22.10	800	19.91
5,000	880	17.67	820	16.47	810	16.27	830	16.52	820	16.49	880	17.64	860	17.25	1,070	21.48	970	19.53	990	19.35	880	17.67
6,000	960	16.02	910	15.09	890	14.90	890	14.90	910	15.11	970	16.16	950	15.81	1,180	19.68	1,070	17.90	1,090	18.19	960	16.02
8,000	1,090	13.68	1,050	13.15	1,040	12.99	1,010	12.66	1,050	13.17	1,130	14.09	1,100	18.78	1,370	17.15	1,250	15.60	1,270	15.85	1,090	13.68
10,000	1,210	12.09	1,180	11.83	1,170	11.68	1,120	11.17	1,180	11.84	1,270	12.67	1,240	12.38	1,540	15.43	1,400	14.03	1,430	14.26	1,200	12.09
20,000	1,630	8.14	1,710	8.53	1,690	8.42	1,520	7.61	1,710	8.54	1,830	9.14	1,790	8.93	2,230	11.13	2,020	10.12	2,050	10.28	1,650	8.14
30,000	1,930	6.42	2,120	7.07	2,090	6.97	1,830	6.09	2,120	7.07	2,270	7.56	2,220	7.39	2,760	9.21	2,510	8.37	2,550	8.51	1,930	6.42
40,000	2,160	5.40	2,470	6.18	2,440	6.10	2,090	5.21	2,470	6.19	2,650	6.62	2,590	6.47	3,220	8.06	2,930	7.33	2,980	7.45	2,160	5.40
50,000	2,360	4.72	2,790	5.57	2,750	5.50	2,310	4.62	2,790	5.58	2,990	5.97	2,920	5.84	3,630	7.27	3,310	6.61	3,350	6.72	2,350	4.72
100,000	3,070	3.07	4,060	4.06	4,010	4.01	3,200	3.20	4,060	4.06	4,350	4.35	4,250	4.25	5,290	5.29	4,810	4.81	4,900	4.89	3,050	3.07
200,000	3,930	1.96	5,940	2.97	5,870	2.93	4,450	2.22	5,950	2.97	6,890	3.44	6,730	3.37	8,380	4.19	7,620	3.81	7,160	3.58	3,950	1.96

(a) Regional estimates smaller than those shown in this table are not published.

Technical Notes (continued)

Reliability of the Estimates (continued)

The relative standard errors of estimates of median duration of unemployment are obtained by first finding the relative standard error of the estimate of the total number of persons contributing to the estimate (see Table A) and then multiplying the figure so obtained by 2.0. The publication cut-off point for estimates of median duration of unemployment is 10,800 persons.

The imprecision due to sampling variability, which is measured by the standard error, should

not be confused with inaccuracies that may occur because of imperfections in reporting by respondents, errors made in collection such as in the recording and coding of data, and errors made in the processing of data. Inaccuracies of this kind are referred to as the non-sampling error, and they may occur in any enumeration, whether it be a full count or a sample. Every effort is made to reduce the non-sampling error to a minimum by careful design of questionnaires, intensive training and supervision of interviewers, and efficient operating procedures.

Table B - Standard Errors of Estimates of Monthly Movements

Size of larger estimate	Brisbane Statistical Division	Brisbane City			Balance of Brisbane Statistical Division	Moreton	Wide Bay-Burnett/Darling Downs	Fitzroy/Mackay	North and Western Queensland	North Queensland	Queensland
		Inner Sub-urbs	Outer Sub-urbs	Total							
1,500						360					
1,800			410		440	390					
2,000		480	430		460	410	470	480			
2,500	640	520	470	570	500	440	520	520	580	550	640
3,000	680	560	500	600	540	480	560	560	620	600	680
4,000	760	630	560	670	610	540	620	630	690	670	760
5,000	820	690	620	720	660	590	680	690	760	730	820
6,000	880	740	660	770	710	630	730	740	820	780	880
8,000	970	830	740	850	800	710	820	830	910	880	970
10,000	1,050	900	810	920	870	770	900	910	1,000	960	1,050
20,000	1,350	1,190	1,070	1,180	1,150	1,020	1,180	1,190	1,320	1,260	1,350
30,000	1,580	1,400	1,260	1,350	1,350	1,190	1,390	1,400	1,540	1,490	1,580
40,000	1,750	1,570	1,400	1,500	1,520	1,340	1,560	1,570	1,730	1,670	1,750
50,000	1,900	1,710	1,540	1,620	1,660	1,460	1,700	1,720	1,890	1,820	1,900
100,000	2,450	2,250	2,020	2,070	2,180	1,930	2,240	2,260	2,490	2,400	2,450
200,000	3,150	2,960	2,660	2,630	2,870	3,150

QUEENSLAND STATISTICAL PUBLICATIONS

Publications issued by the Queensland Office of the Australian Bureau of Statistics may be obtained from G.P.O. Box 1160, Brisbane, 4001 (Telephone (07) 222 6352).

The publications are free, except where otherwise indicated. Prices are for the latest issue and include postage and handling charges.

GENERAL

- 1101.3 List of Publications a
- 1301.3 Queensland Year Book (\$20.75) a
- 1302.3 Queensland Pocket Year Book (\$3.50) a
- 1304.3 Monthly Summary of Statistics m
- 1305.3 Queensland in Relation to Australia a
- 1306.3 Local Authority Areas Statistical Summary (\$2.80)
a ϕ
- 1307.3 Economic Indicators m
- 1312.3 Queensland at a Glance a
- 1313.3 Brisbane City Statistical Summary a

CENSUS OF POPULATION AND HOUSING

- 2405.3 Census of Population and Housing: Characteristics of Persons and Dwellings in Suburbs of Brisbane City and Local Authority Areas within Brisbane Statistical Division (\$4.30) ϕ
- 2406.3 Census of Population and Housing: Characteristics of Persons and Dwellings in Local Authority Areas, Statistical Divisions, and Statistical Districts (\$4.30) irr ϕ
- 2456.0 Census 86 - Age and Sex of Persons in Statistical Local Areas and Statistical Divisions (\$3.40) irr ϕ #
- 2464.0 Census 86 - Persons and Dwellings in Legal Local Government Areas and Urban Centres/Rural Localities (\$3.40) irr ϕ #

INTERCENSAL ESTIMATES OF POPULATION, POPULATION PROJECTIONS, VITAL STATISTICS

- 3201.3 Estimated Resident Population and Area for Local Authority Areas, Preliminary a ϕ
- 3202.3 Estimated Resident Population and Area for Local Authority Areas a ϕ
- 3204.3 Population Growth and Growth Rates in the Intercensal Period in Statistical Divisions and Local Authority Areas irr ϕ
- 3210.3 Age and Sex Distribution of Estimated Resident Population in Local Authority Areas irr ϕ
- 3211.3 Age and Sex Distribution of Estimated Resident Population in Suburbs and Local Authority Areas within the Brisbane Statistical Division (\$1.70) irr
- 3302.3 Causes of Death (\$1.80) a
- 3304.3 Marriages a
- 3305.3 Divorces a
- 3306.3 Births a
- 3307.3 Deaths a
- 3308.3 Demographic Summary a
- 3309.3 Demography: Small Area Summary a ϕ

EDUCATION, HEALTH AND WELFARE, LAW AND ORDER

- 4101.3 Summary of Social Statistics a
- 4110.3 Household Telephone Connections irr #
- 4201.3 Pre-schools and Child Care Centres, Preliminary a
- 4202.3 Pre-schools and Child Care Centres a ϕ
- 4203.3 Schools, Preliminary a
- 4204.3 Schools a ϕ
- 4205.3 Participation in Secondary Education irr
- 4301.3 Health and Welfare Establishments, Preliminary a
- 4302.3 Health and Welfare Establishments (\$2.10) a
- 4303.3 Hospital Morbidity (\$1.80) a
- 4402.3 Child Care Arrangements irr
- 4501.3 Law and Order, Summary a
- 4502.3 Law and Order (\$2.10) a ϕ
- 4503.3 Smoking Behaviour irr
- 4504.3 Non-commercial Fishing irr
- 4505.3 Usage of Legal Services irr #

PUBLIC FINANCE

- 5502.3 Local Government (\$2.80) a ϕ
- 5503.3 Government Finance a

LABOUR AND PRICES

- 6201.3 The Labour Force q
- 6204.3 The Labour Force: Regional Estimates q
- 6220.3 Persons Not in the Labour Force a #
- 6301.3 Industrial Accidents (\$2.10) a
- 6401.3 Indexes of Retail Prices of Food in Queensland Towns a
- 6533.3 Household Expenditure (\$3.40) irr #

AGRICULTURE, FISHING

- 7112.3 Selected Agricultural Commodities, Preliminary a
- 7204.3 Livestock Products - Meat m
- 7221.3 Livestock and Livestock Products (\$2.10) a ϕ
- 7321.3 Crops and Pastures (\$2.60) a ϕ
- 7322.3 Fruit a ϕ
- 7411.3 Agricultural Land Use and Selected Inputs (\$2.10) a ϕ
- 7501.3 Value of Agricultural Commodities Produced a ϕ

MANUFACTURING AND MINING

- Manufacturing Establishments
- 8202.3 Summary of Operations a
- 8203.3 Details of Operations (\$1.80) a
- 8204.3 Employment Size Statistics a
- 8205.3 Small Area Statistics (\$2.90) a ϕ
- 8206.3 Sawmill Statistics q
- 8301.3 Manufacturing Commodities: Principal Articles Produced a
- 8401.3 Census of Mining Establishments: Details of Operations by Industry Subdivision a
- 8402.3 Mineral Production a
- 8403.3 Sand, Gravel, and Quarry Production hy

INTERSTATE AND FOREIGN TRADE

- 8502.3 Interstate and Foreign Trade a

TOURISM AND RETAIL TRADE

- Census of Retail Establishments and Selected Service Establishments
- 8622.3 Details of Operations by Industry Class irr
- 8623.3 Industry Details for Statistical Retail Areas irr ϕ
- 8624.3 Hotels and Accommodation Establishments irr
- 8625.3 Commodity Sales and Service Takings irr
- 8626.3 Industry and Commodity Details by Size of Establishments irr
- 8635.3 Tourist Accommodation q
- 8636.3 Selected Accommodation Establishments irr

BUILDING AND CONSTRUCTION

- 8730.3 Building Approvals: Preliminary Figures for Dwelling Units Approved m
- 8731.3 Building Approvals m ϕ
- 8733.3 Building Approvals: Small Area Statistics a ϕ
- 8741.3 Dwelling Unit Commencements Reported by Approving Authorities m ϕ
- 8752.3 Building Activity q

TRANSPORT

- 9101.3 Transport a
- 9303.3 Motor Vehicle Registrations m
- 9405.3 Road Traffic Accidents q ϕ
- 9406.3 Road Traffic Accidents a

a - annual, hy - half-yearly, q - quarterly, m - monthly, irr - irregular.
 ϕ Information shown for each local authority area. # New title to be issued during 1987.

Unpublished information on many statistical series is available. Inquiries should be directed to the Information Service by telephoning Brisbane (07) 222 6351.